



MONTHLY MEMBERSHIP PROGRESS REPORT

District 11 B2

Results as of: 4/30/2016

GMT: THOMAS MATNEY

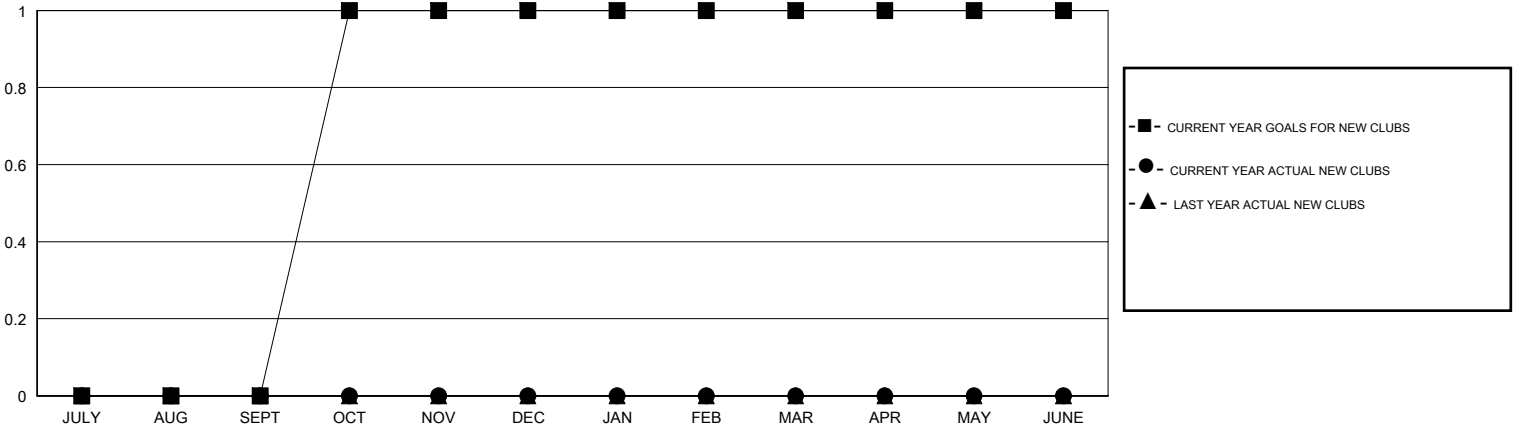
LOCATION MICHIGAN

GMT CA 1

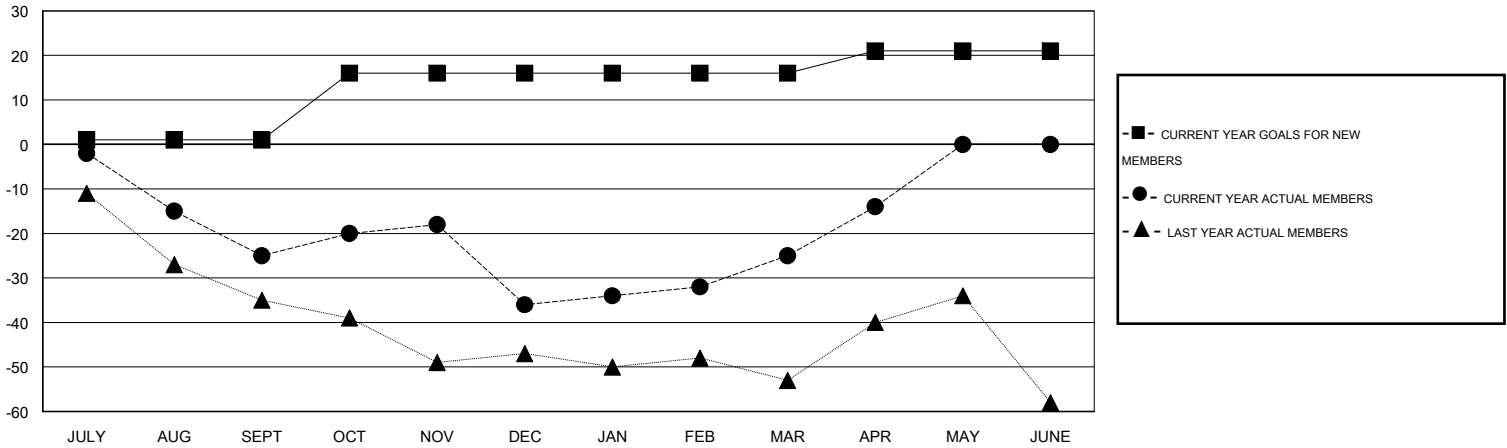
Clubs				
RESULTS FOR 2015-2016				
QUARTER	NEW CLUB GOAL	NEW CLUBS	DROPPED CLUBS	NET GAIN/LOSS
JULY/AUG/SEPT	0	0	1	-1
OCT/NOV/DEC	1	0	0	0
JAN/FEB/MAR	0	0	0	0
APR/MAY/JUNE	0	0	0	0

Members				
RESULTS FOR 2015-2016				
QUARTER	NEW MEMBER GOAL	CHARTER AND NEW MEMBERS ADDED	DROPPED MEMBERS	NET GAIN/LOSS
JULY/AUG/SEPT	1	14	39	-25
OCT/NOV/DEC	15	21	32	-11
JAN/FEB/MAR	0	31	20	11
APR/MAY/JUNE	5	12	1	11

GOALS AND ACTUAL NEW CLUBS CUMULATIVE



GOALS AND ACTUAL MEMBERS CUMULATIVE



DROPPED CLUBS: 1

27 CLUBS OF 40 ADDED 1 OR MORE NEW MEMBERS

GENDER DISTRIBUTION	
MALE	724 (69.88%)
FEMALE	312 (30.12%)

DROPPED MEMBERS	
DECEASED	11
CLUB CANCELLED	0
OTHER	81
TOTAL	92

[CLICK HERE FOR HEALTH ASSESSMENT DATA](#)

FAMILY UNIT MEMBERS	251
HEAD OF HOUSEHOLD	124
NON-HEAD OF HOUSEHOLD	127